



GMT MONTHLY MEMBERSHIP PROGRESS REPORT

Results as of: 10/31/2018

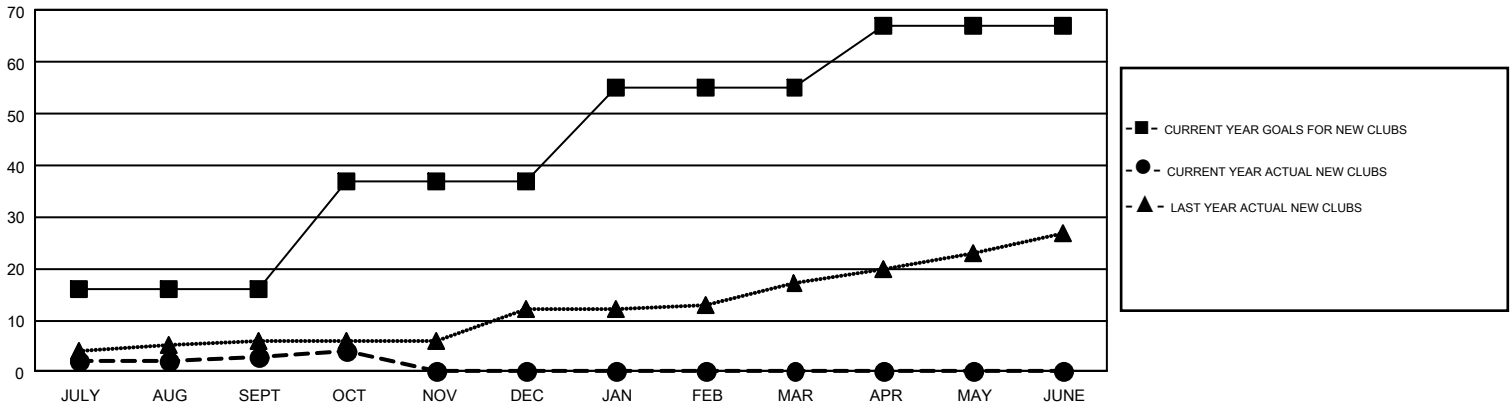
GMT Constitutional Area 1, Group H

GMT: HOWARD HUDSON

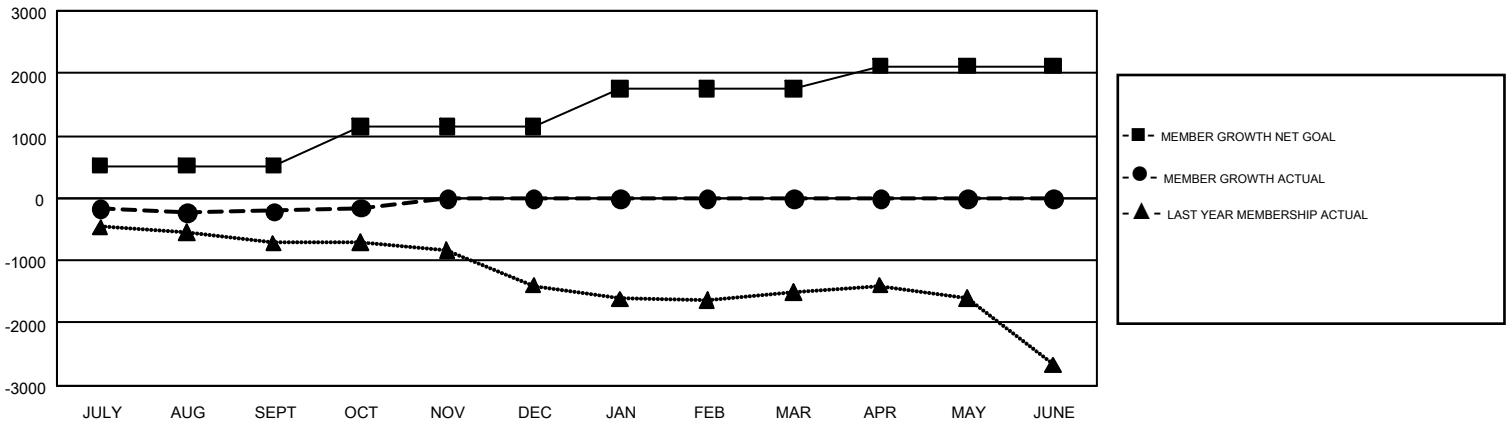
REPORT DOES NOT INCLUDE CLUBS IN UNDISTRICTED AREAS.

Clubs				Members			
RESULTS FOR 2018-2019				RESULTS FOR 2018-2019			
QUARTER	NEW CLUB GOAL	NEW CLUBS	DROPPED CLUBS	QUARTER	MEMBER GROWTH NET GOAL	MEMBER GROWTH ACTUAL	DROPPED MEMBERS ACTUAL (including transfers)
JULY/AUG/SEPT	16	3	12	JULY/AUG/SEPT	521	1,249	1,256
OCT/NOV/DEC	21	1	1	OCT/NOV/DEC	622	392	293
JAN/FEB/MAR	18	0	0	JAN/FEB/MAR	608	0	0
APR/MAY/JUNE	12	0	0	APR/MAY/JUNE	365	0	0

GOALS AND ACTUAL NEW CLUBS CUMULATIVE



GOALS AND ACTUAL MEMBERS CUMULATIVE



DROPPED CLUBS: 13	517 CLUBS OF 1,393 ADDED 1 OR MORE NEW MEMBERS	<u>GENDER DISTRIBUTION</u>	
<u>DROPPED MEMBERS</u>		MALE	23,198 (62.09%)
DECEASED	157	FEMALE	14,166 (37.91%)
CLUB CANCELLED	36	TOTAL FAMILY UNIT MEMBERS 7,665	
OTHER	1,354	FAMILY MEMBERS PAYING HALF DUES 3,970	
TOTAL	1,547		

[CLICK HERE FOR CUMULATIVE MEMBERSHIP DATA](#)